

Lakeview Bring-Your-Own-Device (BYOD)

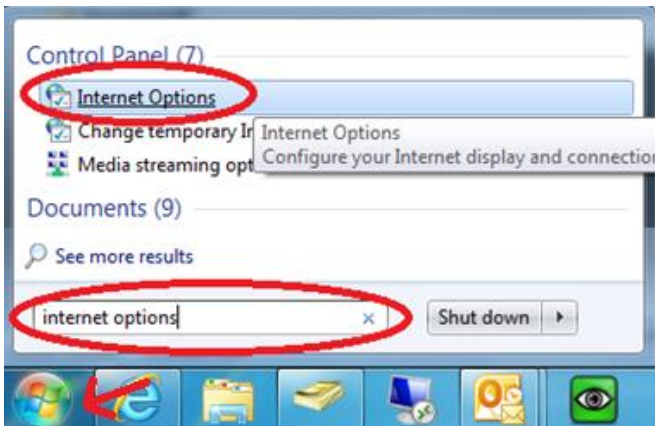
Secure Connection Setup Instructions for **Windows Devices**

These instructions are intended for staff and students who would like to use secure (HTTPS) connections while using our BYOD wireless network. These instructions are completely optional, but you will not be able to access secure webpages and certain Apps without going through these steps. Only unsecured connections will be allowed if you choose not to enter this proxy information.

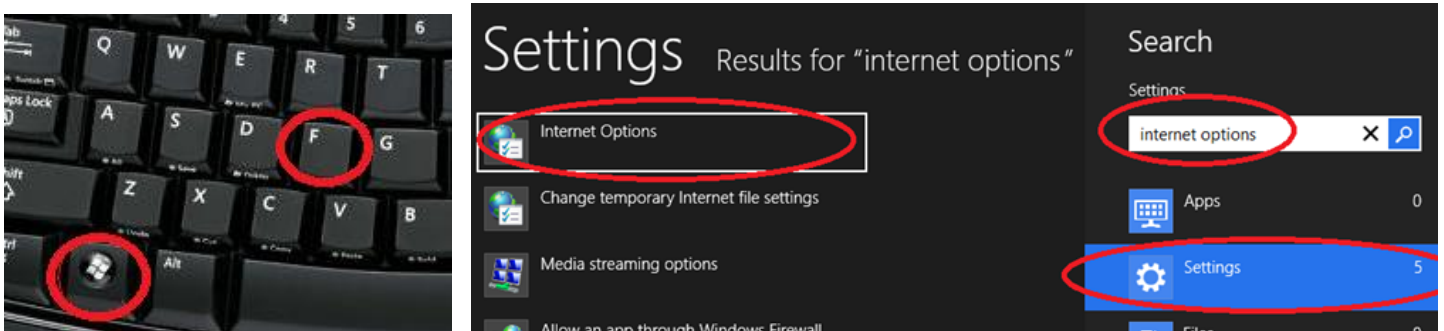
Disclaimer - Before continuing, please be aware that you will need to change these settings back to default if you attempt to connect to another wireless network outside of Lakeview School District. To get around this, please take a look at the very end of this guide to see additional options.

Step 1: You need to locate your “Internet Options” settings, and there are a few ways to go about doing this. The following 3 methods will show various ways to arrive at your “Internet Options.” You only need to choose a single method to proceed to step 2.

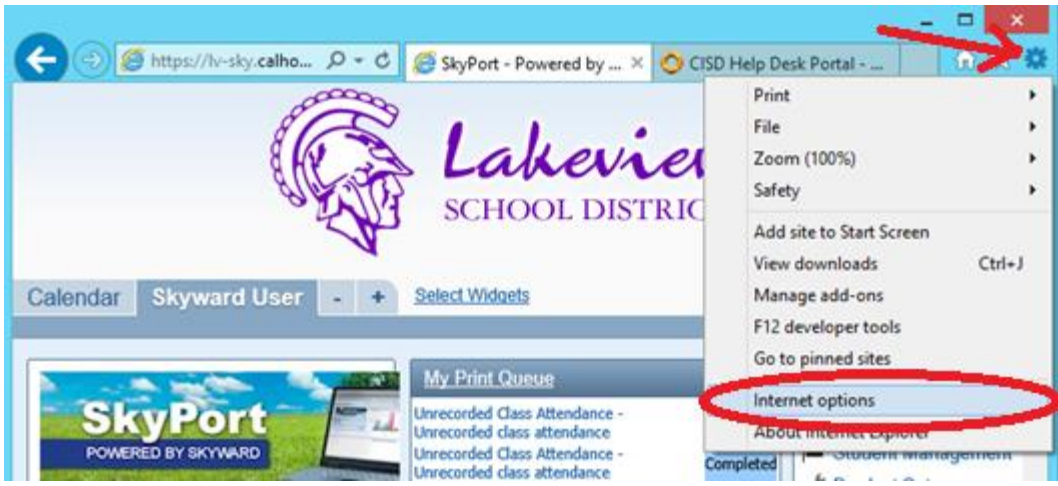
Method 1 - Windows 7 Users Only – Click the “Start” button in the lower left-hand section of your desktop. In the search box, search for “Internet Options”, and then select the “Internet Options” icon that shows up in the search results.



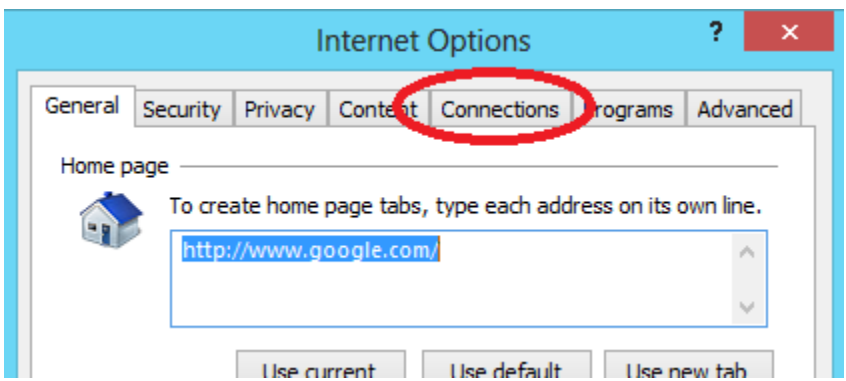
Method 2 - Windows 8 Users Only – Hit the “Windows” key + the “F” key at the same time to bring up your search tool. Search for “Internet Options”, change the results found to “Settings” and select the “Internet Options” search result.



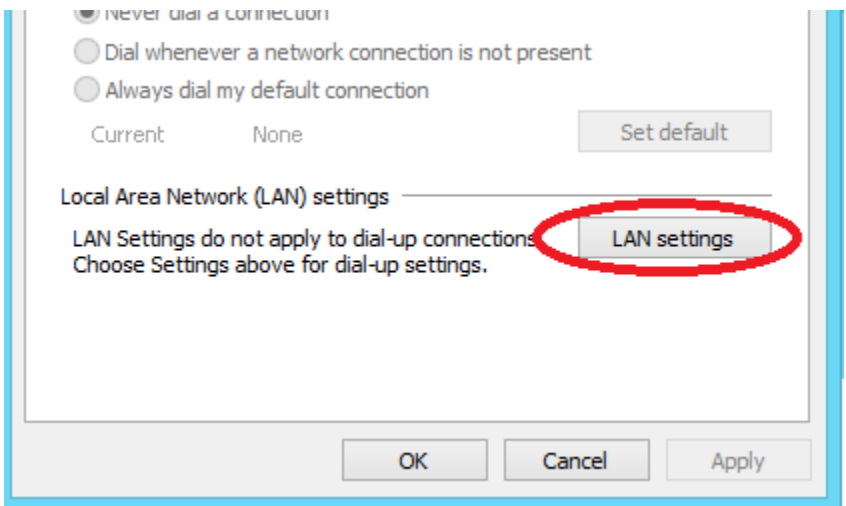
Method 3 - Via Internet Explorer 9 and 10 – Click the “Settings” icon in the upper-right-hand side of the screen. The icon looks like a sprocket. Under the drop-down list, select “Internet Options.”



Step 2: Once you’ve arrived in the “Internet Options” window, select the “Connections” tab at the top as shown below:

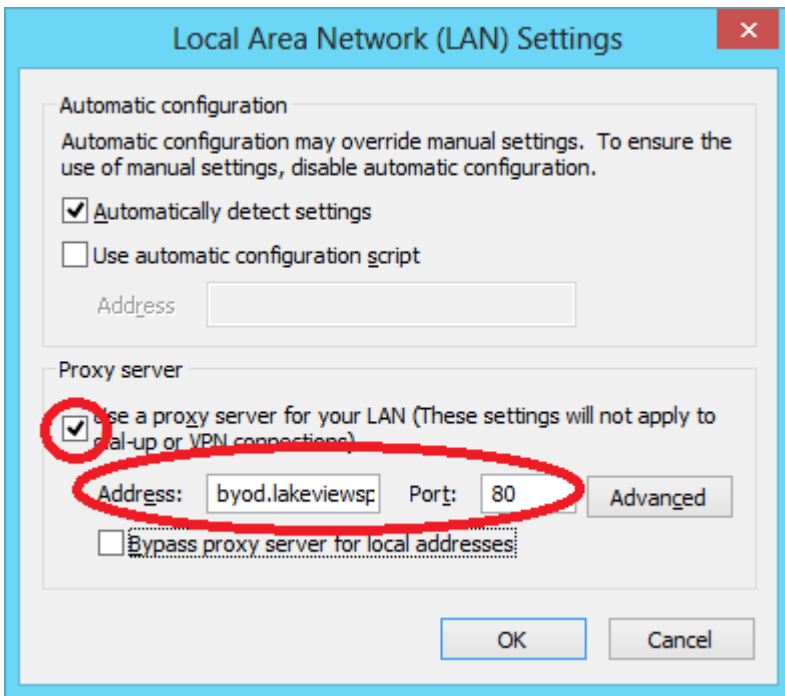


Step 3: At the bottom of the “Connections” window, click on the “LAN settings” icon as shown below:



Step 4: In the LAN Settings window, perform the following steps:

- Check the box that says “Use a proxy server for your LAN....”
- Under the “Address:” text box, enter in: **byod.lakeviewspartans.org**
- Under the “Port” text box, use port **80**



Step 5: Select the “OK” button to save the LAN settings, hit the “Apply” button to apply that to your internet options, and then hit “OK” once again to close your internet options.

Step 6: Connect to the “Lakeview School District – Guest” wireless network. Open up your browser of choice and authenticate to the proxy server using your network username and password. Keep in mind this is the same username and password that you would use to sign into a district computer. This is *NOT* your email address.

Once you have successfully authenticated, you should now be able to browse secure sites (HTTPS) and utilize software applications that require a secure connection.

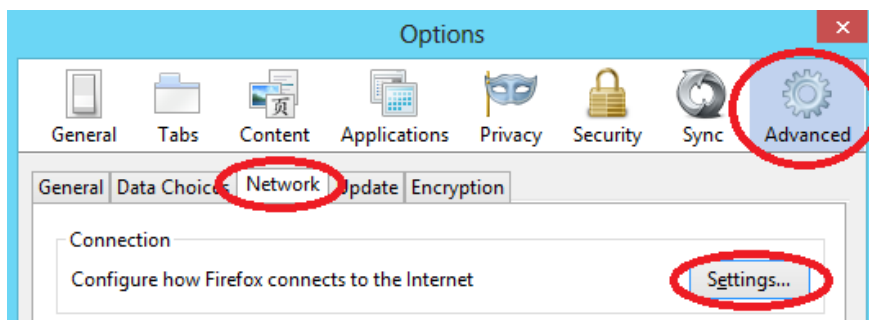
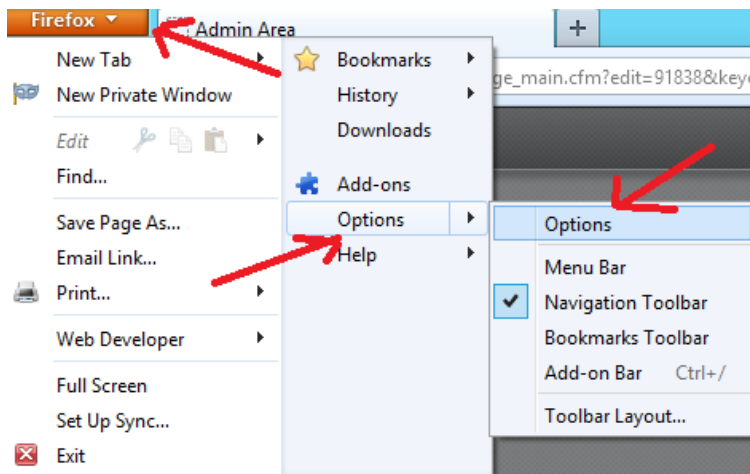
****Important**** As I mentioned above, you will need to uncheck the box in Step 4 that says “Use a proxy server for your LAN...” if you want to use your Windows device on another wireless network, such as your home wireless network. The proxy information will still be retained so that you don’t have to re-enter it the next time you want to use it on the Lakeview network, so if you’re bringing your device to-and-from Lakeview, you will be constantly checking and unchecking this box. You’ll become very familiar with this process after a few times of doing this.

Optional - I would also like to point out that by default, Firefox and Chrome should be set to use the system proxy settings for their respective proxy settings. Once you’ve performed steps 1 through 5, you should not need any additional configuration to Firefox or Chrome.

However, I’ve found that if you get tired of constantly changing your proxy settings between your home network and the Lakeview network, you can (for example) choose to **ONLY** use Firefox at home while **ONLY** using Internet Explorer at Lakeview. Internet Explorer would retain the proxy settings that you’ve defined in steps 1 through 5, while Firefox could

be set to not use a proxy server. You would just have to be aware that in a situation like this, Firefox may not work at Lakeview, and Internet Explorer would definitely not work at home.

Depending on which version of Firefox you're using, you can access your proxy settings by following the pictures below:



- For home use ONLY (will not work at Lakeview), you can toggle the radio button to say "No proxy"
- If you want Firefox to use the settings that you just defined in Steps 1 through 5, select "Use system proxy settings"
- If you want Firefox to be your Lakeview-ONLY web browser (will not work at home), you can set the radio button to "Manual proxy configuration" and change the settings to those defined in Step 4.

